



PacketController Subscriber Analysis

Version: 7.0.7

Updated: Dec. 2020

PacketController Network

Disclaimer

THIS DOCUMENT IS PROVIDED "AS IS" WITHOUT ANY EXPRESS OR IMPLIED WARRANTY OF ANY KIND, INCLUDING WARRANTIES OF MERCHANTABILITY, NON-INFRINGEMENT OF INTELLECTUAL PROPERTY, OR FITNESS FOR ANY PARTICULAR PURPOSE. IN NO EVENT SHALL PACKETCONTROLLER NETWORKS OR ITS SUPPLIERS BE LIABLE FOR ANY DAMAGES WHATSOEVER (INCLUDING, WITHOUT LIMITATION, DAMAGES FOR LOSS OF PROFITS, BUSINESS INTERRUPTION, OR LOSS OF INFORMATION) ARISING OUT OF THE USE OF OR INABILITY TO USE THIS DOCUMENT, OR THE PRODUCTS DESCRIBED HEREIN, EVEN IF PACKETCONTROLLER NETWORKS HAS BEEN ADVISED OF THE POSSIBILITY OF SUCH DAMAGES. BECAUSE SOME JURISDICTIONS PROHIBIT THE EXCLUSION OR LIMITATION OF LIABILITY FOR CONSEQUENTIAL OR INCIDENTAL DAMAGES, THE ABOVE LIMITATION MAY NOT APPLY TO YOU. PacketController Networks and its suppliers further do not warrant the accuracy or completeness of the information, text, graphics, links or other items contained within this document, or assume liability for any incidental, indirect, special or consequential damages in connection with the furnishing, performance, or use of this document. PacketController Networks may make changes to this document, or to the products described herein, at any time without notice. PacketController Networks makes no commitment to update this document.

Table of Contents

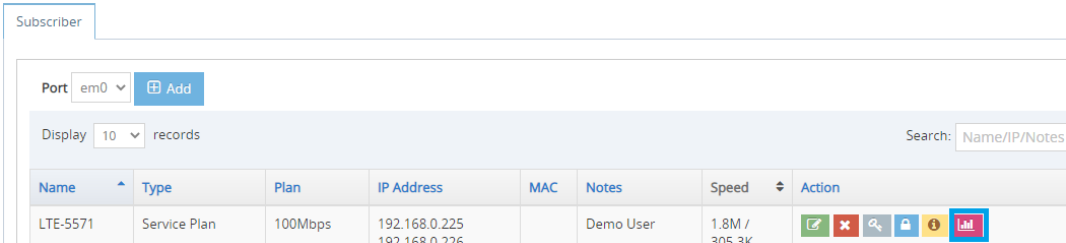
Overview.....	4
User Metrics (History).....	5
User Metrics (Real Time)	6
Active Connections.....	6
Detailed Rules Statistics	7
User Speed Real Time Graph	7
User Packets/Drops Real Time Graph	7
User PPS Real Time Graph	8
Sort By Subscriber Packets/Drops/Speed.....	8

Overview

Subscriber analysis provides proactive subscriber quality monitoring, and it can enable helpdesk people quickly and efficiently diagnose and solve subscriber network issues.

There are 2 entry points to access subscriber analysis:


- Subscriber->Users, click  icon in Action column



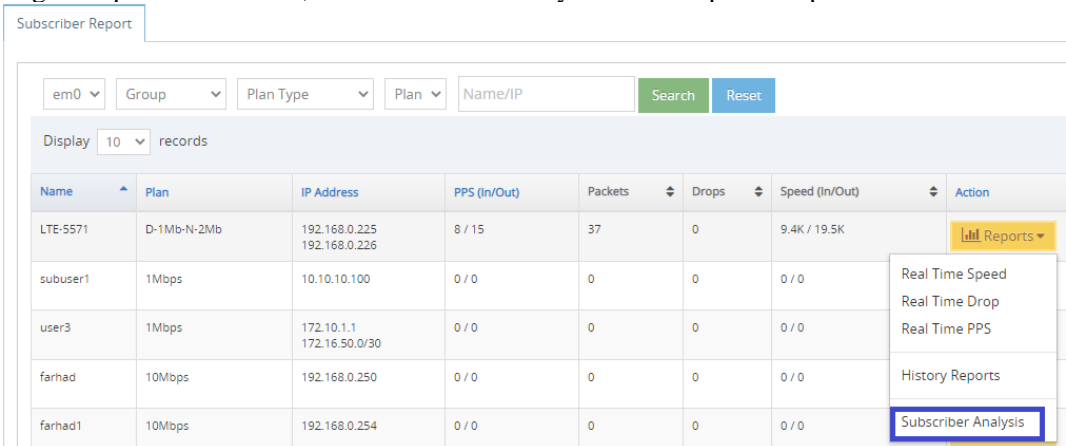
Subscriber

Part: em0

Display: 10 records Search: Name/IP/Notes

Name	Type	Plan	IP Address	MAC	Notes	Speed	Action
LTE-5571	Service Plan	100Mbps	192.168.0.225 192.168.0.226		Demo User	1.8M / 305.3K	


- Log & Report->Subscriber, click Subscriber Analysis in the Reports dropdown menu



Subscriber Report

em0 Group Plan Type Plan Name/IP Search Reset

Display: 10 records

Name	Plan	IP Address	PPS (In/Out)	Packets	Drops	Speed (In/Out)	Action
LTE-5571	D-1Mb-N-2Mb	192.168.0.225 192.168.0.226	8 / 15	37	0	9.4K / 19.5K	 Reports
subuser1	1Mbps	10.10.10.100	0 / 0	0	0	0 / 0	Real Time Speed Real Time Drop Real Time PPS
user3	1Mbps	172.10.1.1 172.16.50.0/30	0 / 0	0	0	0 / 0	History Reports
farhad	10Mbps	192.168.0.250	0 / 0	0	0	0 / 0	Subscriber Analysis
farhad1	10Mbps	192.168.0.254	0 / 0	0	0	0 / 0	

In the subscriber analysis, there are 4 categories of information which is updated every 2 seconds:

- User Metrics (History): The statistics from when the subscriber added or updated the last time
 - User Metrics(Real Time): The current statistics of the subscriber
 - Detailed Rules Statistics: The drilldown of current statistics for all the rules of this subscriber
 - Real Time charts: The real time charts for subscriber including speed, packets/drops and packet per second
-

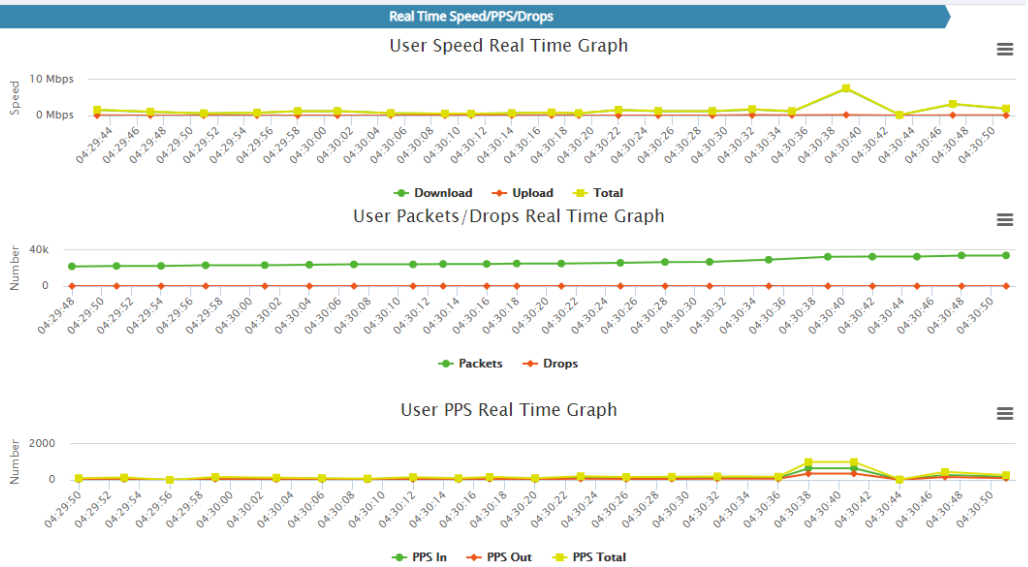
Real Time Analysis

Subscriber [LTE-5571 Plan: 100Mbps]

[Back to Main](#) All the statistics refreshed very 2 seconds

User Metrics (History)		User Metrics (Real Time)	
Stats Since	2020-12-25 04:15:33	Speed(In/Out)	1.4M / 26.5K
Packet Loss	0%	Packet Loss	0%
Total Packets (In/Out)	10909/7265	Packet(In/Out)	0/0
Total Drops	0	Drops	0
Total Usage(Total/In/Out)	13.33MB/12.57MB/758.65KB	PPS(In/Out)	63/63
Average Speed(In/Out)	121Kbps/7Kbps	Active Connections	Link
Average PPS(In/Out)	13/9		

Detailed Rules Statistics			
IP Address	Packet Loss	Speed(In/Out)	PPS(In/Out)
192.168.0.225/32	0%	1.8M / 32.9K	160 / 79
192.168.0.226/32	0%	0 / 0	0 / 0




User Metrics (History)

User Metrics (History)	
Stats Since	2020-12-25 04:15:33
Packet Loss	0%
Total Packets (In/Out)	23313/13967
Total Drops	0
Total Usage(Total/In/Out)	30.87MB/29.65MB/1.22MB
Average Speed(In/Out)	248Kbps/10Kbps
Average PPS(In/Out)	24/15

Metrics	Description
Stats Since	The date/time when the subscriber added or updated the last time, all the stats in this section collected from this date/time till now
Packet Loss	The packet loss rate, it is the percentage of Total Drops/Total Packets
Total Packets(In/Out)	The quantity of packets in download and upload directions
Total Drops	The quantity of packets dropped
Total Usage(Total/In/Out)	The usage in combined, download and upload directions
Average Speed(In/Out)	The total usage/(now-stats since), please note this metric also counts the situation when subscriber is offline
Average PPS(In/Out)	Packets/(now-stats since)

User Metrics (Real Time)

User Metrics (Real Time)	
Speed(In/Out)	18.3M / 447.6K
Packet Loss	0%
Packet(In/Out)	4903/2566
Drops	0
PPS(In/Out)	855/855
Active Connections	

Metrics	Description
Speed(In/Out)	The current speed of this subscriber
Packet Loss	The current packet loss rate, it is the percentage of Drops/Packets
Packets(In/Out)	The quantity of packets in download and upload directions in real time
Drops	The quantity of packets dropped in real time
PPS (In/Out)	The packet per second in real time
Active Connections	This option is only available when network snapshot started. Please refer to the next section.

Active Connections

With active connections, you could check all the current active connections for this subscriber.

Subscriber Active Connections				
Show <input type="text" value="10"/> entries				
Connection	Ports	Protocol	DNS	Speed
192.168.0.225<->175.43.20.150	65107<->443	https	bogon<->	1.17Mbps/19Kbps
192.168.0.225<->211.95.133.138	65108<->443	https	bogon<->	220Kbps/4Kbps
192.168.0.225<->192.168.0.250	65148<->443	https	bogon<->bogon	5Kbps/8Kbps
192.168.0.225<->192.168.0.250	65159<->443	https	bogon<->bogon	3Kbps/6Kbps
192.168.0.225<->192.168.0.250	65131<->443	https	bogon<->bogon	3Kbps/4Kbps
192.168.0.225<->192.168.0.250	65091<->443	https	bogon<->bogon	2Kbps/3Kbps
192.168.0.225<->192.168.0.250	65135<->443	https	bogon<->bogon	1Kbps/2Kbps
192.168.0.225<->110.43.34.66	65155<->443	https	bogon<->	2Kbps/1Kbps
192.168.0.225<->52.114.132.22	65143<->443	https	bogon<->	1Kbps/1Kbps
192.168.0.225<->192.168.0.250	64973<->443	https	bogon<->bogon	848bps/1Kbps

Showing 1 to 10 of 35 entries

Previous **1** 2 3 4 Next

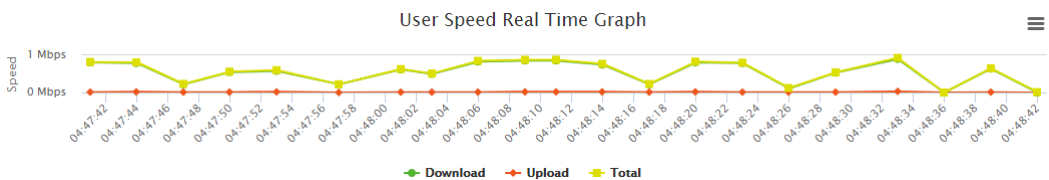
Detailed Rules Statistics

Detailed Rules Statistics			
IP Address	Packet Loss	Speed(In/Out)	PPS(In/Out)
192.168.0.225/32	0%	4.4M / 144.6K	406 / 214
192.168.0.226/32	0%	0 / 0	0 / 0

The detailed rules statistics show all the rules pertaining to this subscriber.

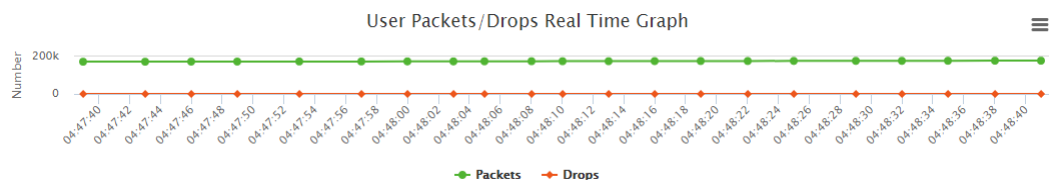
Metrics	Description
Speed(In/Out)	The current speed of this rule
Packet Loss	The current packet loss rate of this rule, it is the percentage of Drops/Packets
PPS (In/Out)	The packet per second of this rule in real time

User Speed Real Time Graph



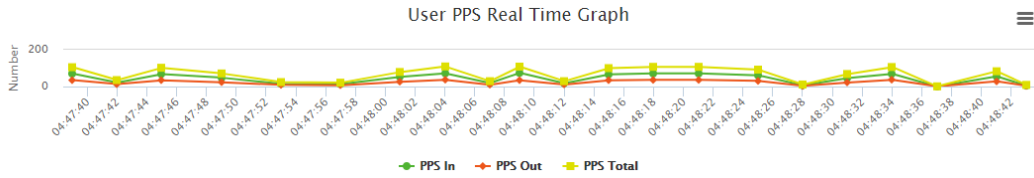
The real time speed of this subscriber and updated in 2 seconds.

User Packets/Drops Real Time Graph



The real time packets and drops of this subscriber and updated in 2 seconds.

User PPS Real Time Graph



The real time packet per second of this subscriber and updated in 2 seconds.

Sort By Subscriber Packets/Drops/Speed

Subscriber Report

em0 Group Plan Type Plan Name/IP Search Reset

Display 10 records

Name	Plan	IP Address	PPS (In/Out)	Packets	Drops	Speed (In/Out)	Action
LTE-5571	D-1Mb-N-2Mb	192.168.0.225 192.168.0.226	1 / 3	5	0	648 / 1.4K	Reports
subscriber1	1Mbps	10.10.10.100	0 / 0	0	0	0 / 0	Reports

In Log & Report, it is possible to sort subscriber packets, drops and speed in real time. It will give you overview on top N subscriber stats in real time.
