



WUI Active Directory Integration

Version: 7.2.4

Updated: August 2021

PacketController Network

Disclaimer

THIS DOCUMENT IS PROVIDED "AS IS" WITHOUT ANY EXPRESS OR IMPLIED WARRANTY OF ANY KIND, INCLUDING WARRANTIES OF MERCHANTABILITY, NON-INFRINGEMENT OF INTELLECTUAL PROPERTY, OR FITNESS FOR ANY PARTICULAR PURPOSE. IN NO EVENT SHALL PACKETCONTROLLER NETWORKS OR ITS SUPPLIERS BE LIABLE FOR ANY DAMAGES WHATSOEVER (INCLUDING, WITHOUT LIMITATION, DAMAGES FOR LOSS OF PROFITS, BUSINESS INTERRUPTION, OR LOSS OF INFORMATION) ARISING OUT OF THE USE OF OR INABILITY TO USE THIS DOCUMENT, OR THE PRODUCTS DESCRIBED HEREIN, EVEN IF PACKETCONTROLLER NETWORKS HAS BEEN ADVISED OF THE POSSIBILITY OF SUCH DAMAGES. BECAUSE SOME JURISDICTIONS PROHIBIT THE EXCLUSION OR LIMITATION OF LIABILITY FOR CONSEQUENTIAL OR INCIDENTAL DAMAGES, THE ABOVE LIMITATION MAY NOT APPLY TO YOU. PacketController Networks and its suppliers further do not warrant the accuracy or completeness of the information, text, graphics, links or other items contained within this document, or assume liability for any incidental, indirect, special or consequential damages in connection with the furnishing, performance, or use of this document. PacketController Networks may make changes to this document, or to the products described herein, at any time without notice. PacketController Networks makes no commitment to update this document.

Table of Contents

Overview.....	4
<i>Prerequisites</i>	4
<i>Notes</i>	4
Active Directory Configuration.....	4
<i>Add User Group in Active Directory</i>	4
<i>Add member to user in Active Directory</i>	6
User Group Mapping	8
WUI Authentication.....	9

Overview

From v7.2.4, PacketController supports WUI Authentication using their LDAP credentials.

Prerequisites

The following are required to configure PacketController WUI authentication based on Active Directory.

- Windows Active Directory installed
- Active Directory Domain configured correctly

Notes

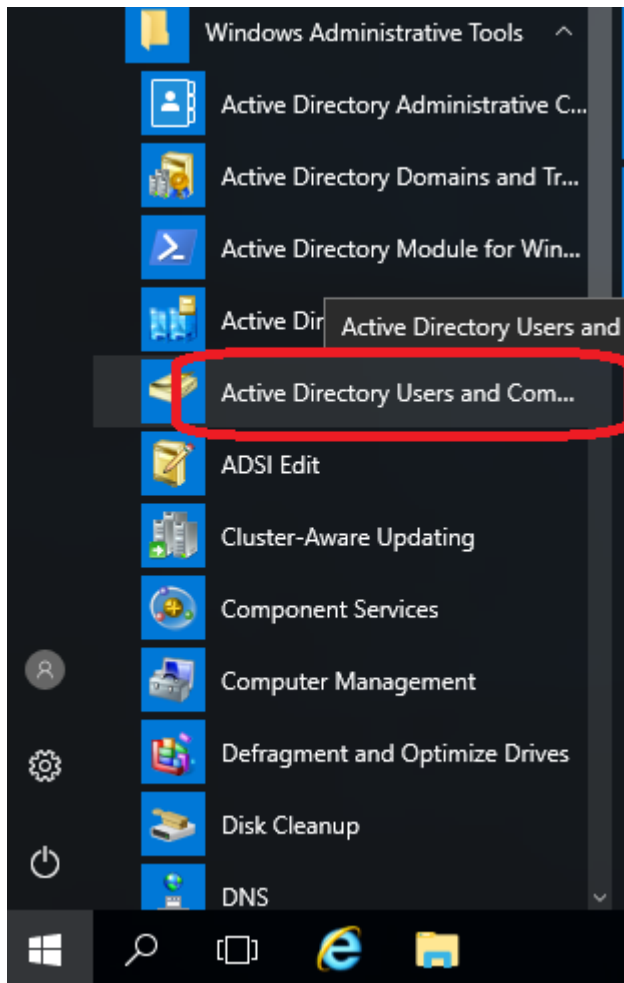
- The user groups must be configured in Active Directory. There is no limit on user groups.
- The users in Active Directory must be assigned to one user group. *Any users without group in Active Directory can only visit home page in PacketController WUI.*
- The name of user group in Active Directory must be mapping to Groups in PacketController.
- The admin account in PacketController can be used no matter it is in Active Directory or not.
- The change password feature in PacketController is disabled. Only admin account can utilize this feature.

Active Directory Configuration

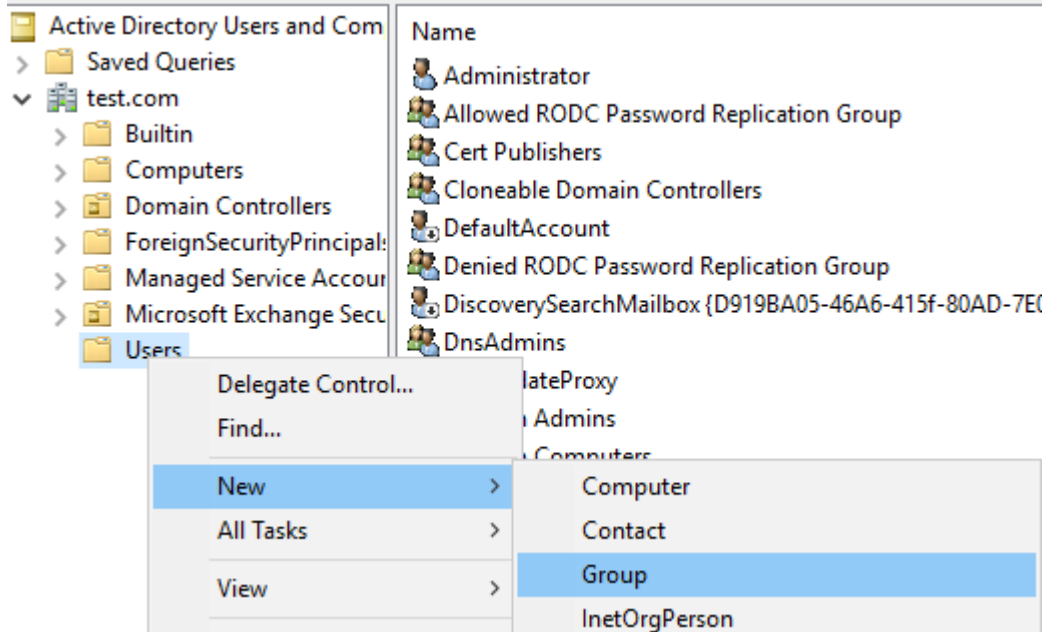
The following steps are only for reference and it is on Windows 2016 Server.

Add User Group in Active Directory

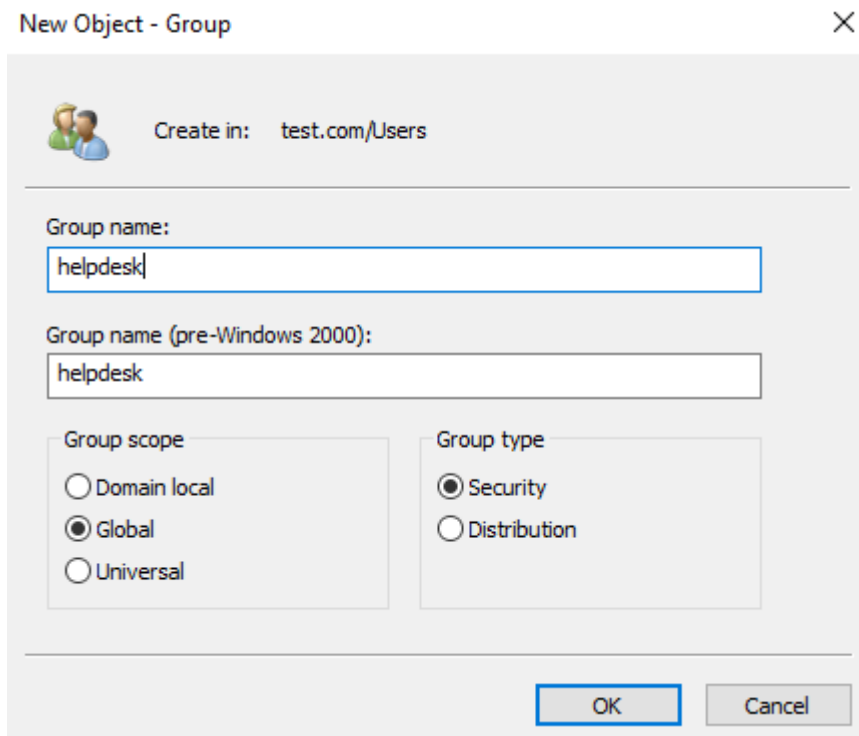
- Login Windows Active Directory Server, click Start->Windows Administrative Tools->Active Directory Users and Computers
-



- Go to user section, right click then New->Group



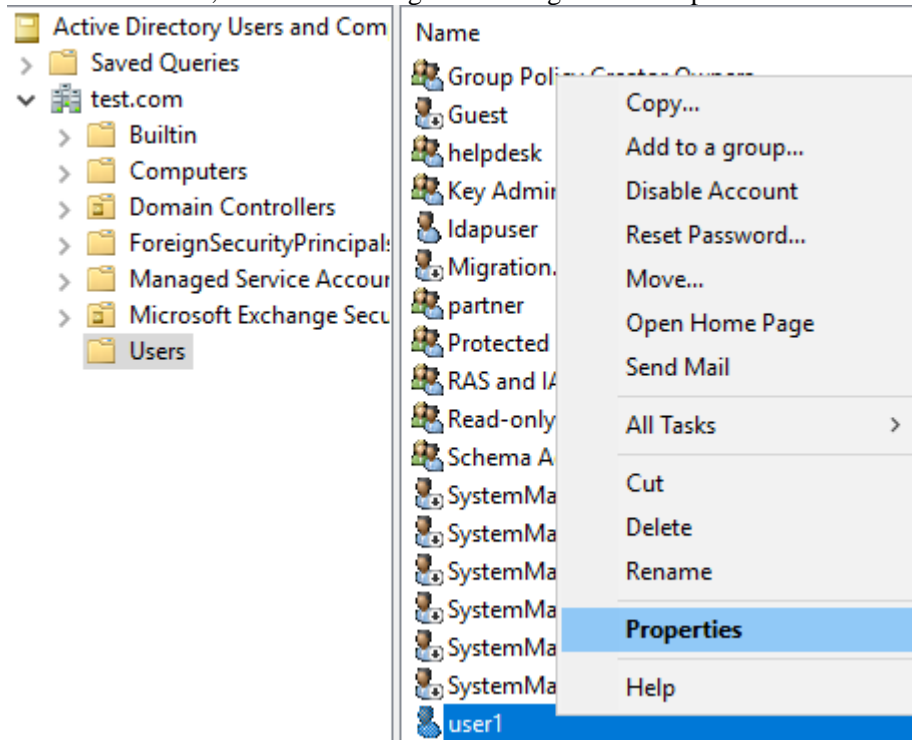
- Input Group name. in this example, we use helpdesk, please note that Group scope is Global and Group type is security.



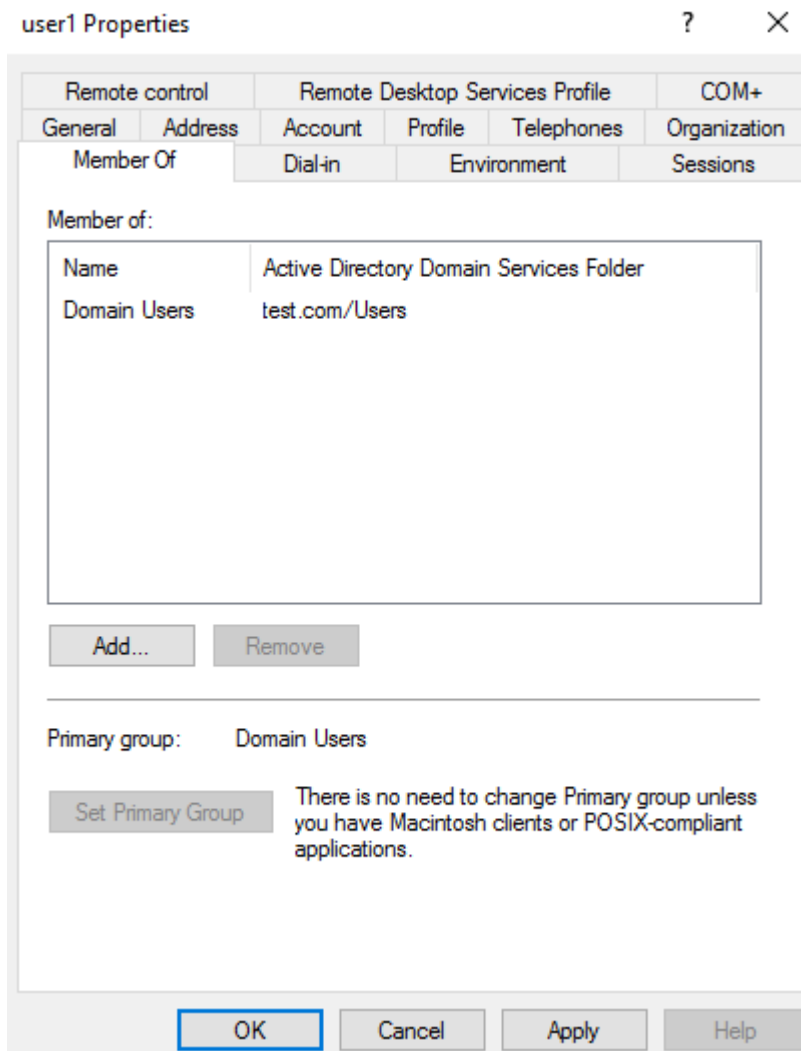
- Click OK button

Add member to user in Active Directory

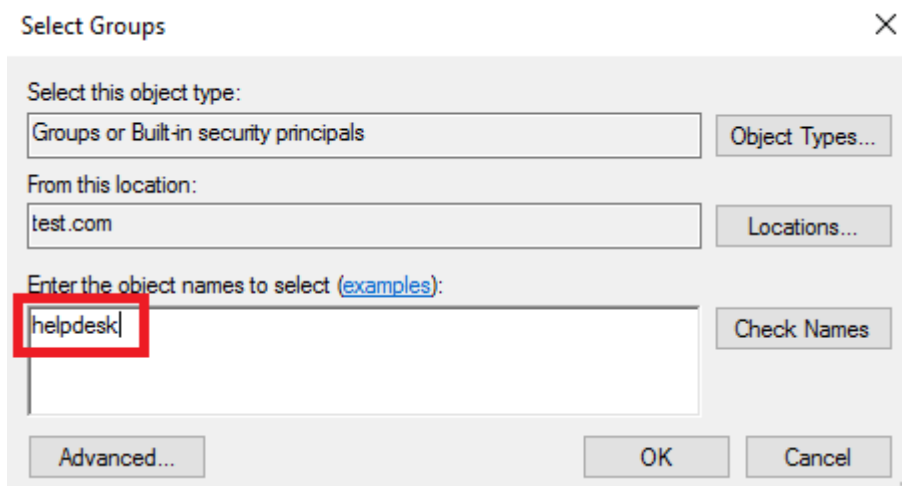
- Go to user section, click one existing user and right click Properties



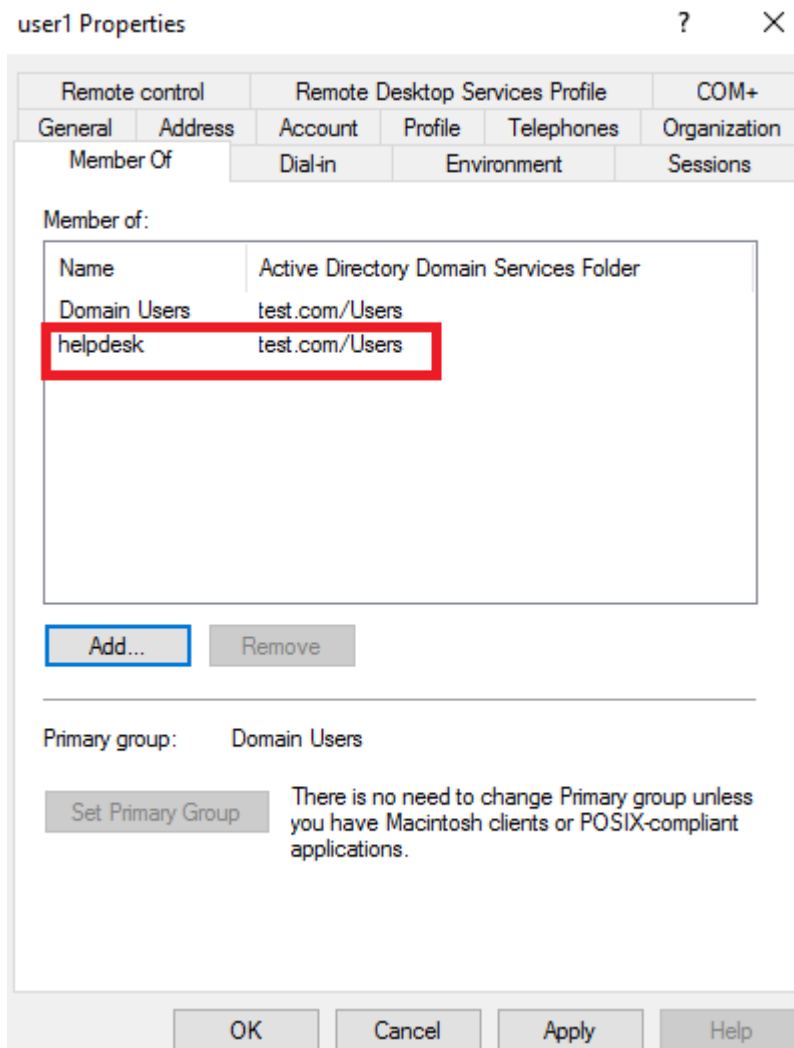
- Click Member Of tab and click Add button



- Input helpdesk as below, you could also click Advanced button to search out user groups



- Click OK button and helpdesk should be displayed in Member of box

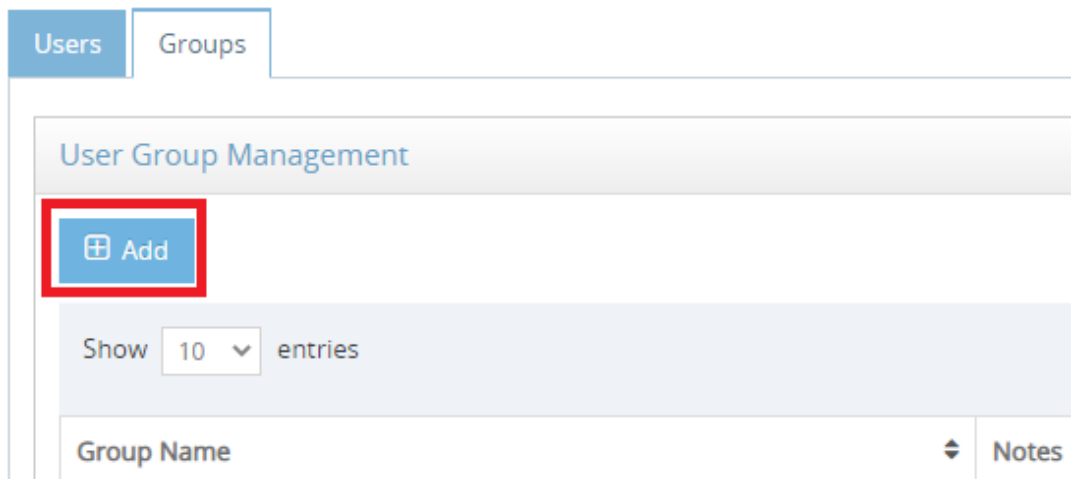


- Click OK button

User Group Mapping

The user group in Active Directory must be mapping in PacketController, for instance, if helpdesk is user group in Active Directory, one user group with exact name *helpdesk* must be set PacketController.

- Login PacketController
- Click System -> Administrator, select Group tab and **Add** Button



- Input the name **helpdesk** and notes, and select permissions for each module

Add User Group ✕

Name	<input type="text" value="helpdesk"/>	Notes	<input type="text"/>
Settings	Read Only	Administrator	Read Only
API	Read Only	Notification	Write
Maintenance	No Access	QoS Policy	Write
Firewall Policy	Write	Subscriber	Write
Service Plan	Write	Time Plan	Write
Quota Plan	Write	App Plan	Write
User Group	Write	Contention Ratio	Write
Intelligent QoS	Write	Subscriber Ops	Write
Network	Write	DPI	Write
Report	Read Only		

Close Save

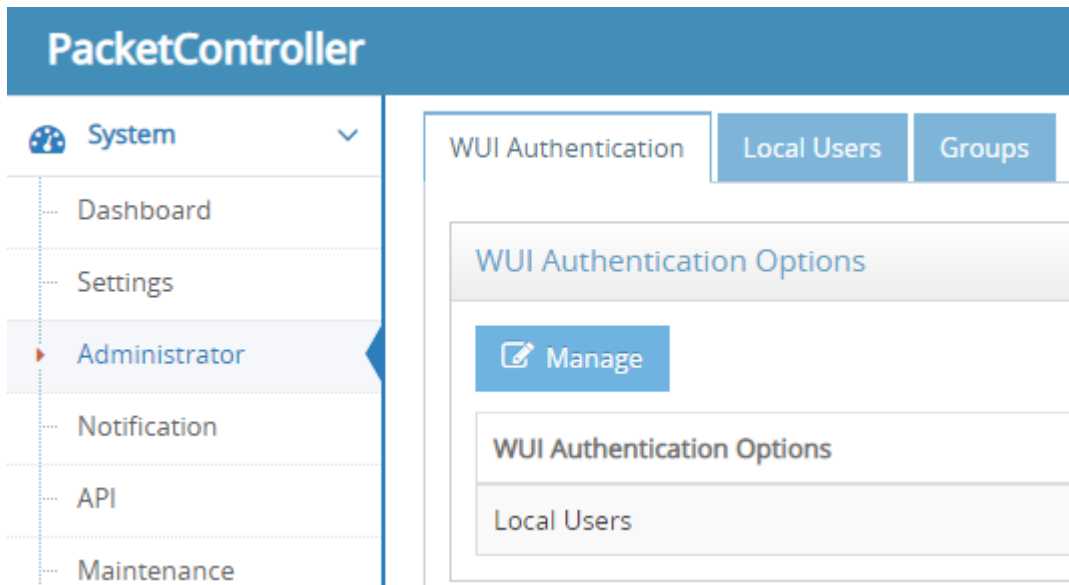
- Click **Save** button

Please refer to PacketController_HowTo-UsersRoles on permission configuration.

WUI Authentication

To set LDAP for WUI Authentication:

- Login PacketController
- Click System -> Administrator, select WUI Authentication tab and click Manage button



- In Edit Authentication Options window, input the following:

Authentication Option	<input type="text" value="LDAP"/>
StartTLS	<input type="text" value="Disable StartTLS"/>
Servers	<input type="text" value="192.168.0.253,192.168.0.252"/>
Port	<input type="text" value="389"/>
Time Out	<input type="text" value="10"/>
Base DN	<input type="text" value="dc=test,dc=com"/>
User Name	<input type="text" value="Administrator"/>
Password	<input type="password" value="....."/>

- Click Save button

Parameter	Notes
Authentication Option	Either Local User or LDAP. Select LDAP for Active Directory integration.
StartTLS	The protocol between PacketController and Active Directory Server.
Servers	The Active Directory Server, and you could input multiple AD servers separated by comma
Port	The port of Active Directory, by default it is 389
Time Out	The connection time out between PacketController and Active Directory Server, by default it is 10 seconds
Base DN	The base dn of Active Directory
User Name	The administrator of Active Directory
Password	The password of administrator of Active

	Directory
--	-----------
